

# Cold Regions Research and Engineering Laboratory



Alaska Projects Office

Anchorage Field Office

Cold Regions Research  
Engineering Laboratory



# Past Accomplishments

- 1956 Guidance for sea ice runways for construction of Distant Early Warning (DEW) Line
- 1958-1959 Camp Century Greenland
- 1966 First ice core from Greenland Ice Sheet (4550 ft)
- 1969 First ice core from Antarctic Ice Sheet (7100 ft)
- 1970-1978 Supports design & construction of trans-Alaska pipeline
- 1977 Supports Air Force relocation of DEW Line radar on Greenland Ice Cap



# Mission Statement

CRREL serves the Army & Nation by advancing and applying cold regions science and engineering technologies and leveraging this knowledge to provide all-season solutions to a wide range of environmentally-driven problems



- Solve national cold regions science and engineering challenges.

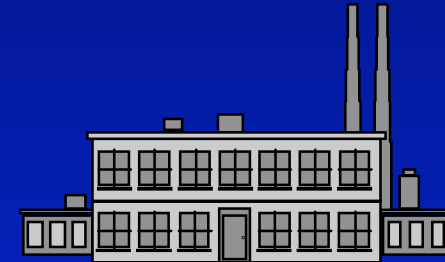
# Customer Diversity



**Dartmouth College**  
**Colorado State University**  
**Ohio University**  
**University of Alaska, Anchorage**  
**University of CA, Berkeley**  
**University of New Hampshire**  
**University of New Orleans**  
**University of Washington**



**Navy • Air Force**  
**DOT • USCG • NSF • FAA • NASA • USFS**  
**States: AK, ME, MD, MN, NH, NY, NV, VT, WA**

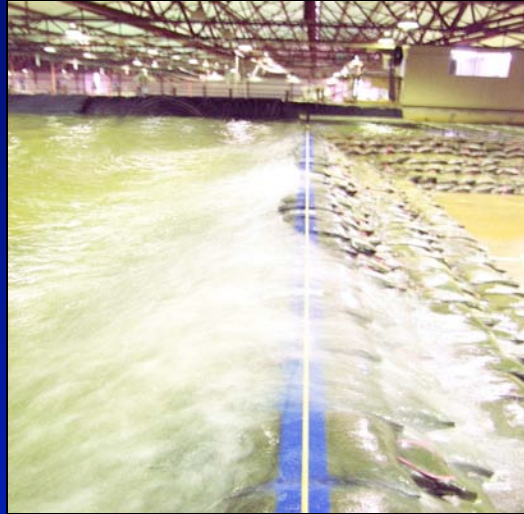


**American Museum of Natural History**  
**Bechtel**  
**CEA Technologies**  
**Foster-Miller, Inc.**  
**Gas Technology Institute**  
**Institute of Ecosystems Studies**  
**Michelin Research, Asia**  
**Riverside County, CA**  
**The Irvine Company**  
**Unisphere, Inc.**

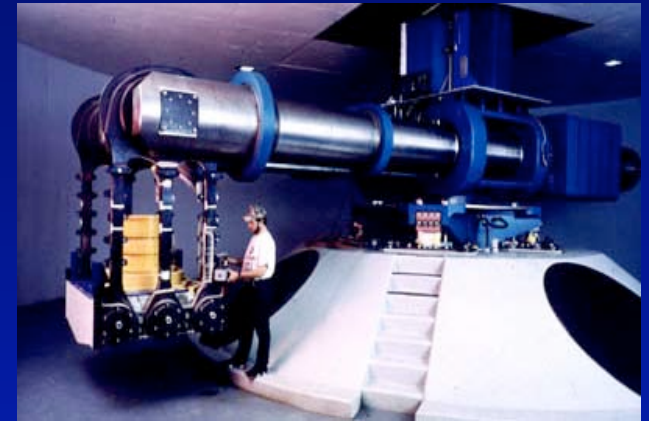
# Unique Facilities



DoD Supercomputer Center



Ice Engineering Facilities



Centrifuge



Hazardous & Toxic  
Wastes



Large physical models

**\$1.2 Billion in Research Facilities & Equipment**

# ERDC CRREL Unique Facilities



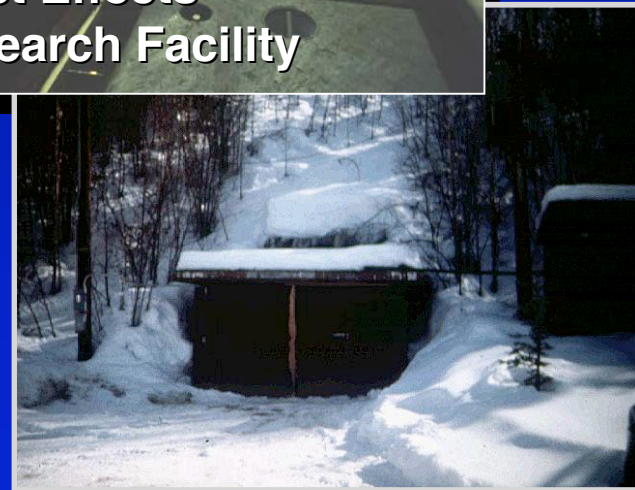
24 Cold  
Laboratories



Frost Effects  
Research Facility



Ice Engineering Model Room



Permafrost Research Tunnel,  
Fox, AK